

Illinois PTA[®] Bulletin

everychild.onevoice.[®]

“Ensuring Every Child’s Future”

A Message From Our President

Spring Forward!

Spring is in the air, our clocks have “sprung forward” and now it is time to “spring forward” your PTA business!

This is a hectic time for everyone, but especially for PTAs and PTA Boards. Not only are you all juggling your own family responsibilities, and perhaps work, there are end-of-year PTA Board activities, Board vacancies to fill for next year, transition of officers and/or chairmen, and hopefully you have all attended convention so you are full of exciting ideas for next year. You and your Board will begin to organize an end-of-year audit, schedule training for the new Board, and begin establishing next year’s budget and nominating committee. This is the time to reflect on this past PTA year in order to evaluate what went well and what could have been done differently. The time spent on these matters will help you as a local unit to set goals for the coming year and will assist you in smooth transitions between officers and chairmen to give you a head start in the work for the next school year – hence the reference to “springing forward.”

Every year each local unit President receives the Illinois PTA Yearbook in which the first section is a local unit President’s calendar. Make sure to consult these pages as they will assist you in organizing all of your “end-of-year” activities and you won’t have to worry about forgetting a thing (hopefully this has been a helpful tool for you all along).

Remember, leaders lead the way by taking the time to read, act on and pass forward materials and ideas that will serve your members well. Taking the time to prepare for “where you go from here” will mean less work for your PTA in the coming year and more time to spend on doing great things for your children.



So, get started. Spring into action!

~ Deb



Debra Strauss
Illinois PTA President

Inside this Issue:

Message from the President	1
National PTA	2
SEL: Advocates	3-4
MORE	5
Value of PTA	6-7
PTA and Contracts	8
PTA Dues	8
University Courses	9
Website	10
Lobby Day	11
Welcome PTAs	12

PTA: More Than Ready for the Future!



As we enter a brand new decade this year, I can't help but think about how we have the awesome responsibility of setting the tone for PTA® the next 10 years – and what good shape we're in to do it. With more than 5 million motivated members, savvy leaders such as yourself, and an abundance

of free resources for parents and teachers, we have the ability to make 2010 and beyond some of the best years the PTA has ever experienced.

For this reason, I encourage you to approach the events and celebrations this year with revitalized gusto. With *Take Your Family to School Week (February 7-13)*, we had a great opportunity to ramp up involvement, recruit new members and re-engage families in our communities. As always, our *Take Your Family to School Week* pays tribute to PTA's Founding Mothers, providing veteran members, new members and non-members with a passionate reminder of the principles that launched our association. What perfect timing for an inspiring look to the past to help guide us through our future!

Of course, this isn't the only thing we're honoring this year. This year we're also celebrating the 40th anniversary of the merger between the National Congress of Parents and Teachers and the National Congress of Colored Parents and Teachers—today's National PTA. We're also excited about the celebration of the 40th anniversary of the PTA Reflections program, dedicated to allowing children to express themselves through the arts. Thanks to these efforts, diversity in both membership and academic endeavors, have enriched the lives of countless children across the country – something we must continue to develop as an association. In March, which we claim "National PTA Legislative Month," we'll take stock of these and other advocacy efforts to ensure our association is doing absolutely everything possible to take action on behalf of our children's education, health, and well-being.

So, as we move forward this year, let's use our impressive legacy to re-inspire ourselves and push through the next decade with passion, integrity, ambition and clarity. I could not be prouder of your efforts up to this point, and I thank you for all that you've done and will continue to do as a leader in PTA. Here's to another successful decade!

Charles J. "Chuck" Saylor
National PTA President
PTA.org/chucksaylor



National PTA Nominating Slate

The Nominating and Leadership Development Committee met January 22-23, 2010 to consider individuals for eight member representatives to the National PTA Board of Directors, each for a two-year term and three members to the Nominating and Leadership Development Committee, each for a three-year term.

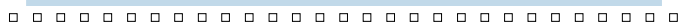
The committee reports the following nominees for election at the 2010 national convention:

Member Representatives (8) Board of Directors

- Vito Borrello – New York
- C. Andre' Daniels – New Jersey
- Jo Ann Ota Fujioka - Colorado
- Jean Tokuda Irwin – Utah
- Lupe Morales – Texas
- Melissa Nehrbass – Virginia
- Denise Sultz – Kansas
- Sophia Waugh - California

Member (3) Nominating and Leadership Development Committee

- Sue Bellows – Michigan
- Tibby Milne – Utah
- Charles Scott - Tennessee



SEL Family Advocates: At Your Service

By: Caryn Curry, SEL Project Coordinator, Illinois Children's Mental Health Partnership (ICMHP)

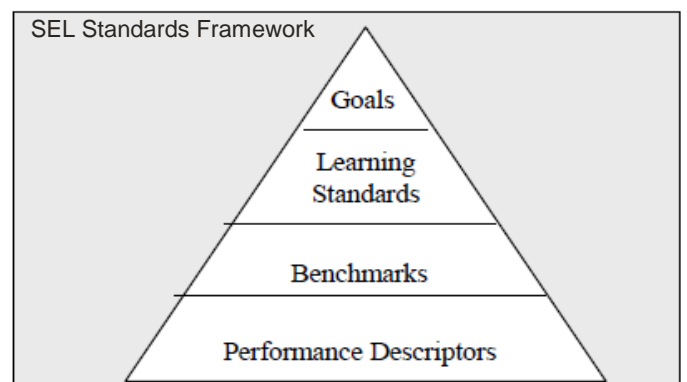
In a recent issue of the *Illinois PTA Bulletin*, Illinois State Board of Education (ISBE) Superintendent Chris Koch outlined the state's efforts to implement social and emotional learning (SEL) and the Illinois SEL Standards. Tasked with designing the plan to facilitate implementation across the state, ISBE and the Illinois Children's Mental Health Partnership (ICMHP), in conjunction with other partners, have always been committed to fostering effective partnerships between parents and educators in order to provide the best opportunity for children to become socially and emotionally competent. Since the inception of the Illinois Social and Emotional Learning (SEL) Standards Professional Development Project (also referred to as the SEL Implementation Pilot Project, or the Project) in 2007, parents/caregivers have had a critical role in the planning and implementation of SEL and Illinois' SEL Standards in the states' schools.

The SEL Project is structured to have participating schools create SEL Implementation Teams designed to lead their school communities through the planning and initial execution of an SEL implementation process. From the beginning, those SEL teams have been required to include at least one parent to ensure that family voice is represented as schools developed their implementation plans, processes and strategies. Parent representatives have participated in SEL trainings and workshops with the other members of their school teams and have brought critical perspectives to the conversations about how best to "do" SEL in their school communities.

One of the lessons learned in the Project's first year was that parent representatives and school teams at-large needed more support in order to effectively incorporate parent and caregiver voice into the SEL implementation process. In an effort to "walk the talk," the Project Leadership Team created a new

position to provide that support. With the limited funding that was available, the part-time position of SEL Family Advocate position was born. The Advocate's role is to work with local school SEL implementation teams to develop an infrastructure that establishes and sustains effective family involvement in the ongoing process of SEL. S/he is responsible for: 1. working most directly with family representatives of participating SEL teams; and 2. supporting families' efforts to develop and maintain effective partnerships between schools and primary caregivers toward the understanding and promotion of social and emotional learning as an educational philosophy and the social and emotional learning standards.

There are eight SEL Family Advocates across the state, each representing the same Area (geographic region) that hosts the Project's local statewide training/coaching team. For the past two years, Advocates have worked diligently to develop relationships with parents and educators who are participating in the Project, while reaching out beyond Project participants to raise awareness about social and emotional learning. In the process they have used creative strategies to enhance parents' knowledge about SEL, facilitated increased communication between parents and the school personnel educating their children, and begun to lay the groundwork for sustainable family engagement as part of the SEL implementation process.



SEL Family Advocates: Continued

Several months ago, Debra Strauss, president of the Illinois PTA, presented the work of the Association, including its 2009 Resolution on Social and Emotional Learning, to the SEL Family Advocate team. It is clear that both groups understand the importance of SEL to the educational process; it is also clear that both groups understand the importance of parent involvement to the education of children. With that in mind, and with the support of the PTA leadership, the SEL Family Advocates want to share their work with local PTA members. Advocates would like to meet with local PTA members to raise awareness about SEL and collaborate with the PTA to ensure that SEL, through attention and adherence to the state Standards, is embedded in the educational process and practices of every school across the state.

If you are interested in attending an SEL Awareness Presentation, or would like the opportunity to connect with the SEL Family Advocate who serves your region of the state, please contact Linda Delimata, SEL Training Coordinator, Illinois Children's Mental Health Partnership at ldelimata@leeogle.org or 815-652-2054, x224.



Congratulations!!

Robert A. Black Magnet Branch PTA in Chicago

WHAT: National PTA presented a national award for **Take Your Family to School Week**, February 7-13th.

WHY: PTA presented a big check for \$1,897 ---in the amount for the year PTA was founded to Robert A. Black Magnet Branch PTA during an award ceremony for their innovative approach in promoting family involvement to their school and local community.

WHERE: Robert A. Black Magnet Branch,
7133 S. Coles, Chicago, IL 60649
(773) 535-6395

MORE?

More what?...

...More men!

The National PTA has joined a group of organizations that want to get men more involved with their children. Men Organized to Raise Engagement (MORE) consists of a number of organizations. Just to name few:

- WATCH D.O.G.S. (Dads of Great Students)
- All Pro Dad
- Real Men Cook / Real men Charities Inc.
- Black Star Project
- National Fatherhood Initiative
- National Compadres Network

The mission of MORE is:

To serve as a conduit for greater father and significant male involvement, resulting in positive outcomes and successful relationships for children, parents, schools and communities. PTA MORE helps PTA leaders and units:

- ⊗ Work with schools and communities to provide programs that engage fathers and positive male figures in the educational and social development of children,
- ⊗ Develop male leaders who work with fathers and male role models to enhance positive male parenting and involvement with youth,
- ⊗ Act as a resource for families, communities and schools on fatherhood initiatives and issues,
- ⊗ Increase the visibility and outreach of the quality programming of the coalition members.

Did you know that 39% and 58% of women of the men in prison come from homes without a male role model in prison? That children are less likely to have substance abuse when there is a male role model involved with the children. Being raised by a single mother raises the risk of teen pregnancy, marrying with less than a high school degree, and forming a marriage where both partners have less than a high school degree. Fatherless children are twice as likely to drop out of school.

Get MORE
Involved!

So Illinois is looking for **men** to form a new committee that will concentrate on ways to help men get more involved. We will try to meet mainly by phone conference so it does not matter what part of the State you may be in. In fact, it would be best if we had representation from across the State.

If you are interested, please contact:

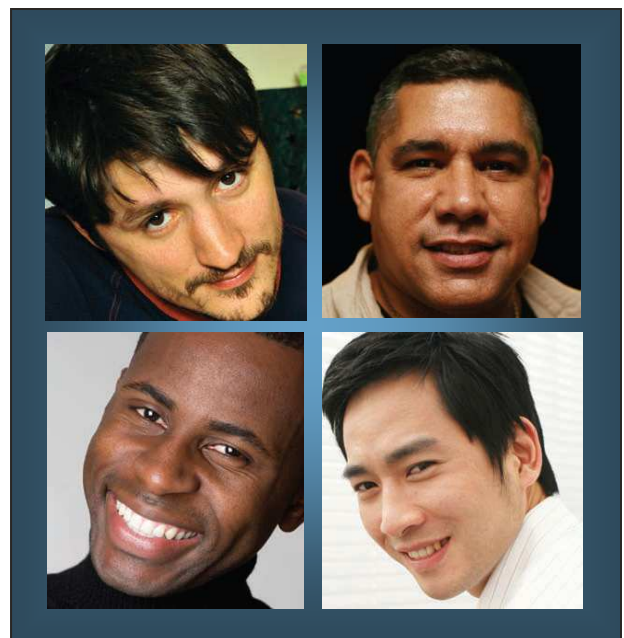
Bruce Bohren

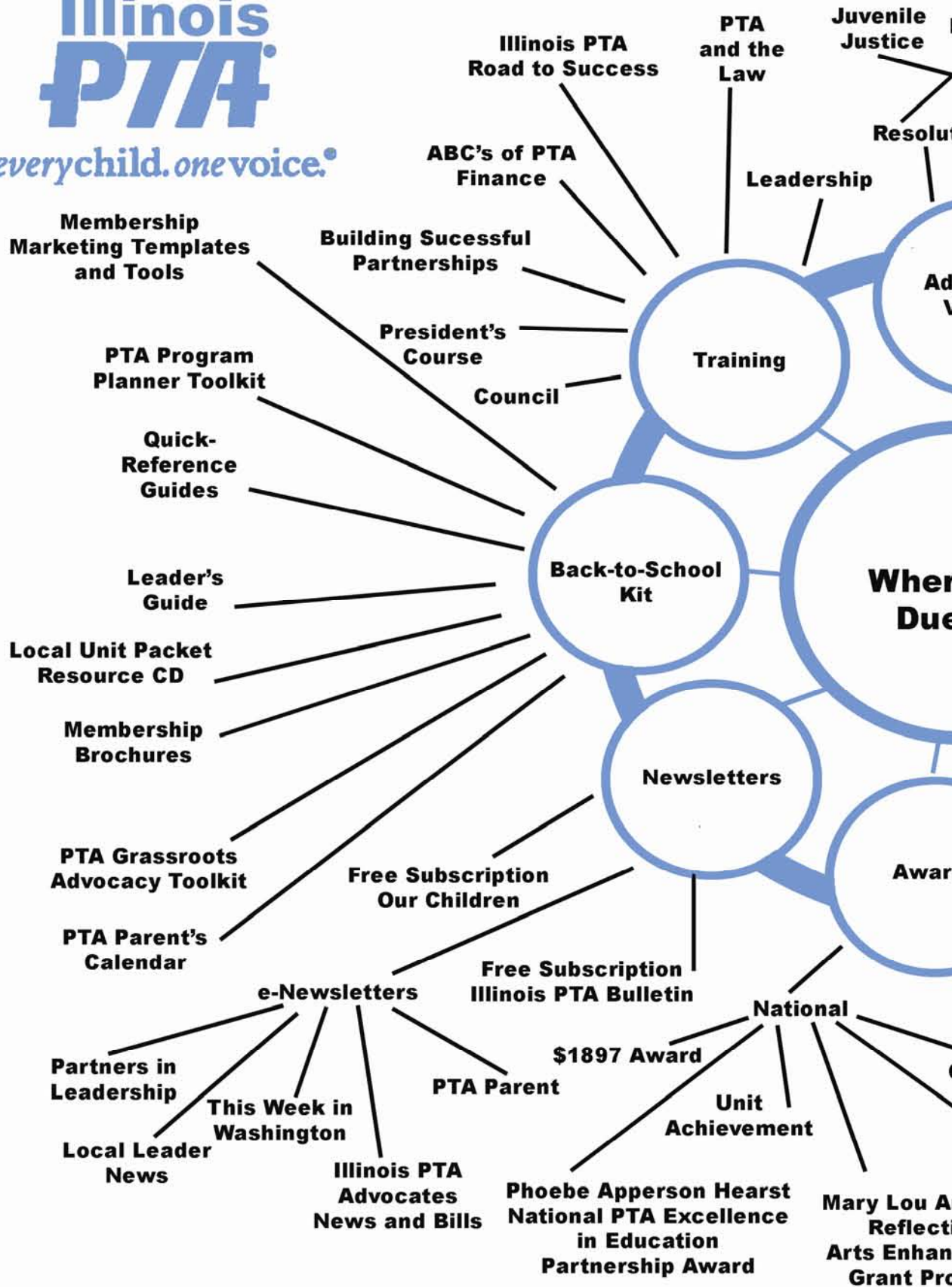
Illinois PTA President-Elect

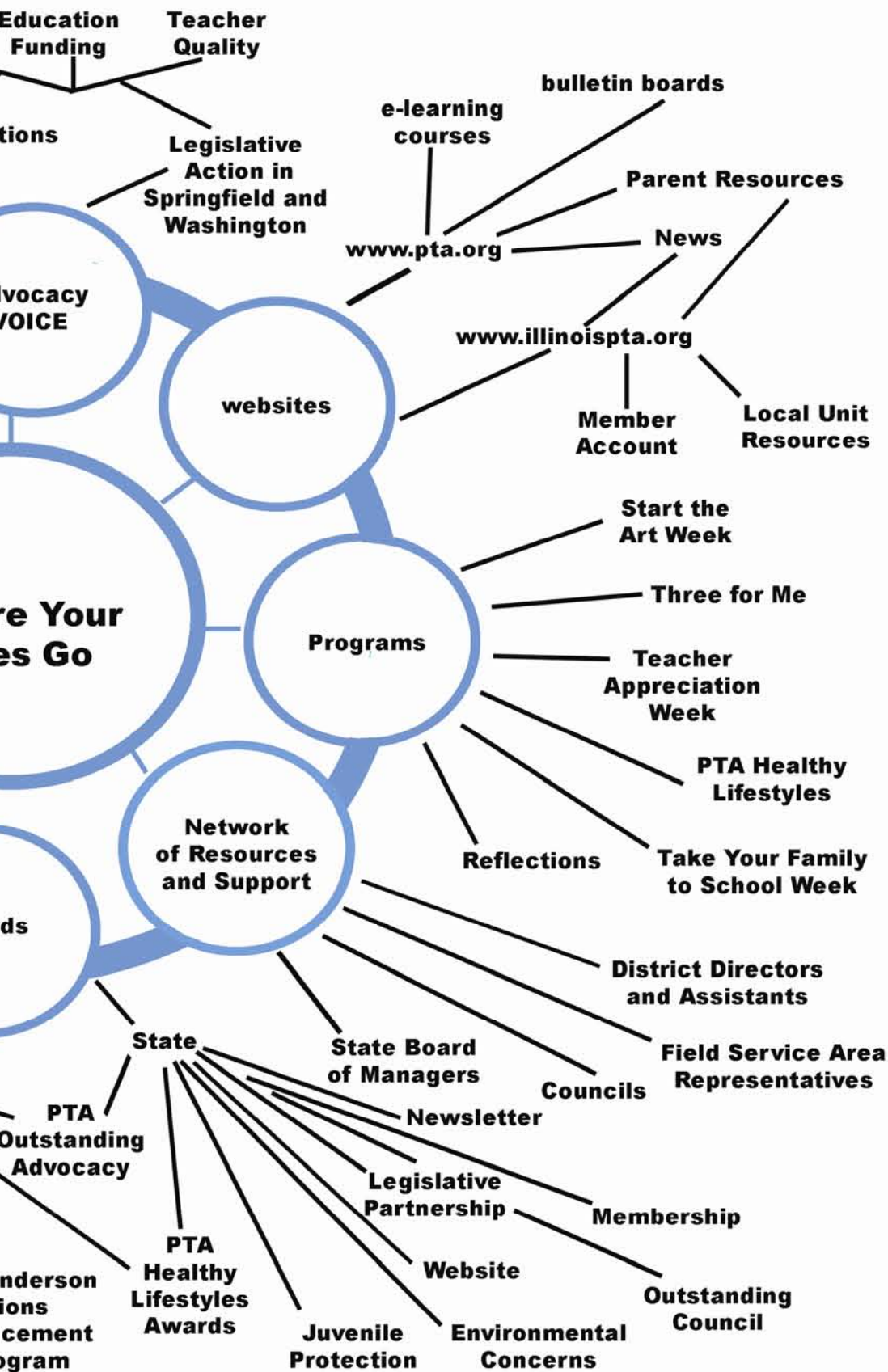
Phone: 847-362-1279

Email: engbruce@earthlink.net

While I will get the initial meetings started, I hope the Committee will appoint their own chairman.







The Value of PTA

PTA and CONTRACTS

By: Barbara Miralgio, Treasurer

Source: 2009-2010 National PTA Money Matters Quick Reference Guide, pg. 28

In the course of a year, a PTA may enter into a variety of contracts. For instance, a PTA may contract for a band for a dance or purchase supplies for a fundraising venture. The PTA assumes the responsibility to comply with the terms and conditions of the contract and to pay the stated sum. The fact that an activity is not a financial success or that the PTA has insufficient funds to meet its obligation has no effect on the responsibility assumed.

Before you enter into a contract on behalf of your PTA, consider the following:

- Has the membership approved the project?
- Does the president have authorization from the board/executive committee to negotiate a contract?
- Have all contracts been received in writing?
- Are the terms and conditions of the contract understood?
- Have they been reviewed by legal counsel, if needed, and agreed to by the board/executive committee?
- Is the length of the contract limited to the term of the participating officers, and does not encumber future boards?

When entering into a contract, the PTA president is responsible for the agreement and should clearly identify that it is the PTA entering into the contract and not the president as an individual. The signature on a written contract should read, “_____ PTA (or PTSA or council or district) by: John Doe, President.”

Remember, if there is any question about the terms or conditions of the contract, the proper time to seek advice is **before** the contract is signed.

PTA DUES FOR 2010-2011

By: Barbara Miralgio, Treasurer

At the 2009 PTA Convention, the delegates approved for a fifty cent (\$0.50) increase in the Illinois PTA dues starting July 1, 2010. This will bring the state dues portion to \$2.00 per person. The total dues for both national and state PTA will be \$3.75 per person. PTA is still one of the least expensive organizations to join. Fees to join other organizations can range from \$25 to \$100 per person.

Your PTA may need to look at your total dues collected in order to accommodate this change in state dues. Article V, Section 10, c. of the Sample Local Unit Bylaws states the following in regard to Local Unit Dues: “The amount of the local membership dues shall be determined by the members of the local PTA/PTSA unit.” Any change, then, to your local unit dues must be voted upon by your membership at a General Meeting. Any change to your local dues should be approved before July 1st or before you collect dues for the 2010-2011 school year.

The Illinois PTA continues to provide updated materials and programs to our local units. A new web site is up and running that is more user-friendly and easier to navigate. More information for our local units is now available on that web site, including the PTA newsletter, up-to-date Legislation information, parent engagement ideas, and much, much more. In the past year, the Information and Advanced Courses have been revised into one new course: “PTA: Road to Success”. A new Money Matters course has been developed that concentrates on the basic financial practices of the PTA. As always, these courses may be presented to your local unit at your location upon your request for **no charge**. Contact your District Director for more information.



PTA University Courses

Submitted by: Brenda Diehl, Leadership Chair

The Illinois PTA University Degree Program is an incentive program intended to encourage leadership development of PTA members. The program has three components, a “Bachelor’s Degree,” “Master’s Degree,” and “Doctoral Degree.” At each level, participants are required to complete a number of study courses or workshops, attend PTA-sponsored events, and, at the doctoral level, coordinate a “thesis project.”

Requirements for the Bachelor’s Degree are:

- Completion of PTA Road to Success;
- Completion of PTA Money Matters;
- Attending a District or Council meeting or workshop;
- Attending a State conference or workshop (not at convention); and
- Attending the Illinois PTA State Convention.

Requirements for the Master’s Degree are:

- Completion of Bachelor’s Degree;
- Four of the following “Electives”:
- ABC’s of PTA Finance
- PTA and the Law
- Council Course
- PTA President’s Course
- Legislation/Advocacy Conference
- National PTA Convention



Requirements for the Doctoral Degree are:

- Completion of Bachelor’s Degree
- Completion of Master’s Degree
- Train the Trainers (by recommendation only)

Thesis Project (by prior approval of Leadership Development Chairman in consultation with District Director or Field Service Area Representative)

Suggestions for the Thesis Project include organizing a candidate’s forum; writing a resolution for presentation at State Convention; submitting bylaws amendments to the State Bylaws Committee, etc.

Requirements for the Bachelor’s and Master’s degrees may be fulfilled simultaneously—that is, someone may attend and receive credit for PTA and the Law or any other elective under the Master’s Degree before receiving the Bachelor’s degree. However, the Master’s Degree cannot be awarded before fulfilling all the requirements of the Bachelor’s Degree.

Those who wish to pursue their degrees from the PTA University will receive a Transcript form that must be filled out with the date of the requirement and the initials of a state board member or course leader. The completed forms may be returned to the Leadership Development Chairman. Those receiving the degrees will be recognized for their accomplishments.

**Nominating Committees
should be hard
at work.**

REMEMBER

**Registration Forms Due
May 1, 2010**

The deadline for registering new officers for 2010-2011 is May 1st this year.

- ⊗ Local Unit forms are pink
- ⊗ Council forms are green

★ A new form must be sent to the office by this date. If an election results with a different than anticipated name after the due date, the form may be updated and resubmitted to the office at that time.

Registration forms can also be downloaded from the Illinois PTA website, www.illinoispta.org at your convenience.

Should Our PTA Develop a Web Site?

By: Mary Ann Daugherty, Technology Specialist

Has your PTA asked this question? And, if the answer is yes, the next question is, "How?"

Technology is moving quickly. There are more people using the web for a variety of reasons. Visit a college campus, or even high school, and watch the students as they walk around with their laptops to access the web constantly or text their friends with the smart phones. This is the future and as PTAs, we need to be open and flexible enough to move forward with technology. Many of our young members get their information via the web, be it news or keeping in touch through sites such as facebook.

Website development is different from making a flyer in Word or a higher-end program such as Quark Express or Adobe InDesign. It's more like working with a "table" like those found in Word. Movement of pieces is somewhat restricted but it's doable with practice. Some of these programs allow developed pages to be saved as html, but the document doesn't always come out as the original. Try this with one of your flyers in Word and see what happens.

Think about the following when deciding to create a website:

- Take some time as a group or appoint a committee to look into this. There may be someone in your PTA unit or council who can develop a website and would be willing to help you with the project.
- Decide what you want the website to convey to those who access it.
- Perhaps you can take a survey of your members and find out what they'd like to see on the website. Should it be a means to communicate with parents concerning programs and events? Would this be a place where parents could ask questions or communicate ideas to the PTA? Would you want to go as far as collecting dues via your website?
- Decide if you want to access a free hosting site and use their software and suggestions OR should the PTA spend funds for website hosting. Google "website hosting, free" and there's a page full of options. Take time to study them to make an intelligent decision.

- Does this site allow for easy uploading of the files?
- Programs are available for PC and Mac that range in price. I use Dreamweaver for the Illinois PTA site, but it is an expensive and high-end program. Again, go online and Google "Website software" and there is plenty to read - software, how to develop a website, and free software." I do have some URL addresses for website development. You may email me and I'll send them to you.
- Now that you've made these decisions, it's time to decide who will be responsible for your website. There may be someone on the board who has some rudimentary knowledge and willing to step in. Should this be made a chairmanship on the board?
- Think about the layout of your website.
 - √ The website needs to be identifiable as a PTA site. The Illinois PTA logo needs to be on the site. Permission to use this logo is easy. Just send the *Logo Use Permission Form*, which can be found on the CD the PTA president received or on the website: www.illinoispta.org under "About Illinois PTA/InFORMATION."
 - √ Does your PTA/school have a color scheme?
 - √ Does your PTA have a logo?
 - √ What information do you want to place on the site?
 - √ Who will be responsible the development of the articles/announcements placed there? Must the president or executive committee approve what is placed on the site?
 - √ How often should the site be updated?

There is a lot to think about and it may take time to get all of these decisions made. If you have any questions, you may contact me.

Mary Ann Daugherty, Technology Specialist,
mdaugherty15@comast.net

Ensuring Every Child's Future
Opportunities to *Speak Up Speak Out*

Want to make a difference? Not sure how? Here's *your* chance!

ILLINOIS PTA is planning a
Speak Up Speak Out Week
April 19 through April 23, 2010

A time to talk to your legislators----

either in person, by phone, by e-mail or by fax!

No trip to Springfield necessary!

Want to know more?

Check the Illinois PTA website, www.illinoispta.org, as plans for our first ever "virtual lobby event!" unfold.

Here's a chance to learn how to effectively use the tools at your disposal to make a difference for our children.

Questions?

Contact:

**Barb Quinn,
Illinois PTA Legislation Chair,
bquinnpta@aol.com**

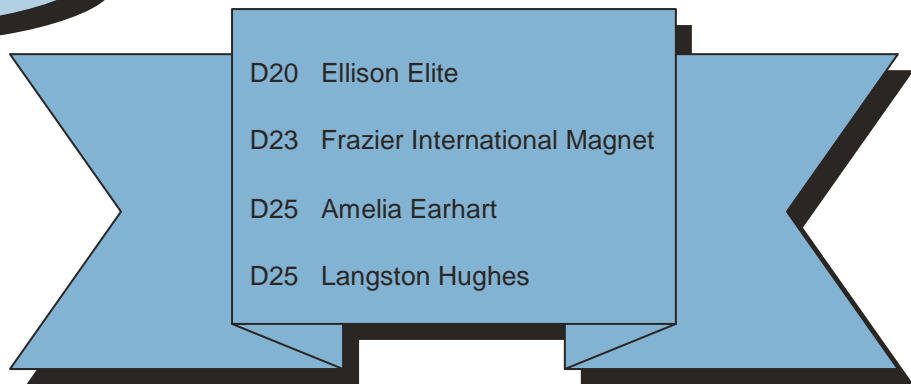
The Illinois PTA Bulletin is published five (5) times per year: Fall, Winter, Convention Issue, Spring and Summer by the Illinois PTA, PO Box 907, Springfield, IL 62705. Subscriptions are \$10.00 per year.

Debra Strauss, Illinois PTA President
Jolene Lowder, Executive Director
Nicole Fentem, *Illinois PTA Bulletin*, Editor

Office e-mail address: ilpta@ameritech.net
Website: www.illinoispta.org
Phone: (800)-877-9617 Fax: (217) 528-9490

Illinois PTA Bulletin Editorial Board

Colleen Charaska Lorrie Snodgrass
Margie Skirvin Bruce Bohren Mary Ann Daugherty
Rhonda Jenkins Jean Donovan



Illinois PTA Office
PO Box 907
Springfield, IL 62705-0907

NONPROFIT ORG.
U.S. POSTAGE
PAID
SPRINGFIELD, IL
PERMIT NO 797

If you are no longer a PTA president, please forward this and all mailings IMMEDIATELY to your successor and forward the current president's name and address to the Illinois PTA Office.

